

Evaporative Pad Cooling System

Maintain maximum comfort and production levels, even in extreme heat conditions, with J&D Manufacturing's Evaporative Pad Cooling System. Our Pad System is designed to enhance the cooling capability of your current ventilation system to further reduce the temperature in your building. Single or stacked pad systems available to cover a small area or an entire sidewall.

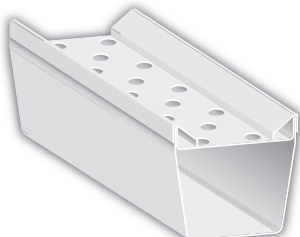
Features

-Distribution and Return System-

- High efficiency system
- Largest self contained PVC return gutter on the market today
- Easy to install, one-piece PVC trough
- Closed top or open top feature for easy visibility and regulation of water supply
- Automatic float matches water supply with cooling demands
- Submersible pump
- Easy to clean
- Simple shutdown for seasonally affected environments
- Water filter, shutoff, flush valve and bleed-off included in plumbing package
- Stainless steel and PVC construction to safeguard your investment
- Optional stainless steel return gutter wall mount brackets

-Pads-

- 6" deep pads specially designed and coated for effective evaporation and maximum durability
- Water is spread evenly over the pad surface as a film rather than droplets for uniform wetting
- Pad surface dries quickly in absence of water to inhibit micro-organism growth
- Non-porous surface inhibits algae and minerals from attaching to pads
- Coated pads are tough and durable for repeated cleaning
- Improved life expectancy over standard pads
- Easy to install and remove or replace pads



**Up to 80'
with one
pump!**

Part#	Description
Single Layer Header & End Kits	
ECH300	Header & End Kit, for 3' Pad
ECH400	Header & End Kit, for 4' Pad
ECH500	Header & End Kit, for 5' Pad
ECH600	Header & End Kit, for 6' Pad
Stacked Header & End Kits	
ECH700S	Header & End Kit, Stacked System, for 7' of Pad
ECH800S	Header & End Kit, Stacked System, for 8' of Pad
ECH900S	Header & End Kit, Stacked System, for 9' of Pad
ECH1000S	Header & End Kit, Stacked System, for 10' of Pad
Distribution & Return Kits with SS Wall Mount Brackets	
EC100	Distribution & Return Kit, 10' Complete, Open Top, w/Brkts
EC100C	Distribution & Return Kit, 10' Complete, Closed Top, w/Brkts
Distribution & Return Kits	
EC110	Distribution & Return Kit, 10' Complete, Open Top
EC110C	Distribution & Return Kit, 10' Complete, Closed Top
H-Channel	
ECS109	H-Channel, for Stacked Systems, Stainless Steel, 10'
Pump	
PP10492	Pump, Submersible, 1/2 HP, 69 GPM
Pads - 45/15 Flutes	
ECP134515EC	Cool Cell Pad, 3' x 6" x 1', 45/15 with Edge Coat
ECP144515EC	Cool Cell Pad, 4' x 6" x 1', 45/15 with Edge Coat
ECP154515EC	Cool Cell Pad, 5' x 6" x 1', 45/15 with Edge Coat
ECP164515EC	Cool Cell Pad, 6' x 6" x 1', 45/15 with Edge Coat
*30/30 flutes are available on special order	

HIGH PRESSURE FOG & COOLING

⚠WARNING: This product can expose you to chemicals including chromium, which is known to the State of California to cause cancer and birth defects or other reproductive harm. For more information go to www.P65Warnings.ca.gov/product.